

Lambton Metal Service

Safety, Quality & Service

Phone: 519.344.3939 - Toll Free: 1.888.569.6757

LMS Qualifications: ISO 9001:2015, CWB Group, NACE Level 1 & Level 2 / SSPC
 LMS Memberships: CISC, OSSFA & Construction Associations in Sarnia, London, Toronto



Lambton Metal Service (LMS) has been servicing the commercial and industrial structural steel / industrial coating needs throughout Southwestern Ontario since 2004. LMS is a unique facility with:

- Estimating (FabTrol MPR)
- Detailing Department (SDS/2 Detailing Software)
- Fabrication Shop (Crane Capacity Combined 100Ton*)
 (CNC 9 Spindle Drill Line, CNC Angle Line & CNC Plasma Burn Table 8'x20')
- In house Transportation (3 Highway Tractors / 30 Trailers)
- Industrial & Underground Coatings / Sandblasting / Paint Shop
 (8 Wheelabrator steel shot blasting facility)
- Structural Steel Erectors (17 ton Hydro-Lift, 45 ton R/T Crane, 40 ton Cranes)
- Industrial Field Coatings (On-Site Blasting, Coatings & Inspection)

Through the leadership of owner and operator Mr. Antonio (Tony) Savo and family. Their team effort is dedicated to providing you, their customer the best possible "Safety Quality and Service" (SQS) in the industry.

Tony Savo's experience in this business extends back to 1974, when he was an active partner in Lambton Metal Works Ltd.. In June 2004 Tony established his own company, Lambton Metal Service. Tony's experience, along with his team of highly skilled and efficient personnel, makes Lambton Metal Service a very competitive company in the structural steel industry.



Lambton Metal Service Strengths...

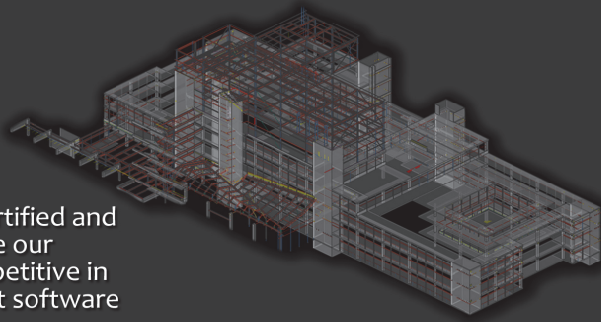
- Structural Steel Fabrication and Erection
- Specializing in Design-Build Projects
- Open Web Steel Joists
- Metal Roof & Floor Deck
- Miscellaneous Steel
- Stairs - Railings - Ladders - Walkways
- General Maintenance
- Custom Fabrication
- Sand Blasting
- Industrial Coatings
- Underground Coatings



Estimating / Detailing Depts.

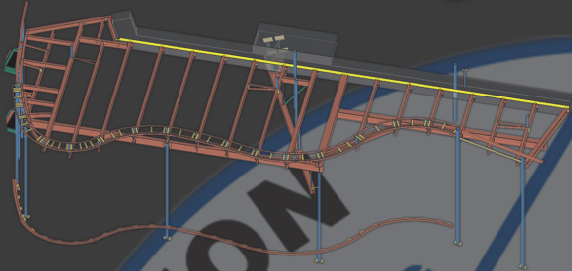
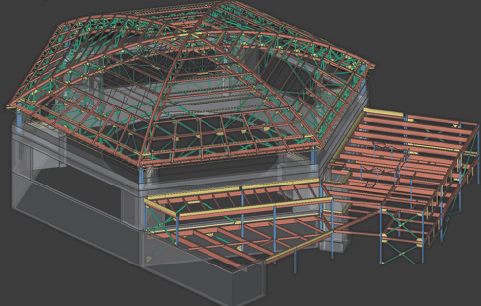
Estimating / Detailing
 Tony Savo Jr. (Design Build Estimator) ext. 2232
 Mike Chicoine (Estimating) ext. 2234
 Franco Savo (Project Co-Ordinator) ext. 2239
 CAD, SDS/2 Systems, FabTrol MPR

The Lambton Metal Service Estimating and Detailing Departments employ certified and experienced personnel with the skill and qualifications to schedule and supervise our projects from awarded contract date to final completion. Our goal is to be competitive in our industry with the use of CAD & SDS/2 systems, Fabtrol and some of the latest software available today.



Fabrication Shop

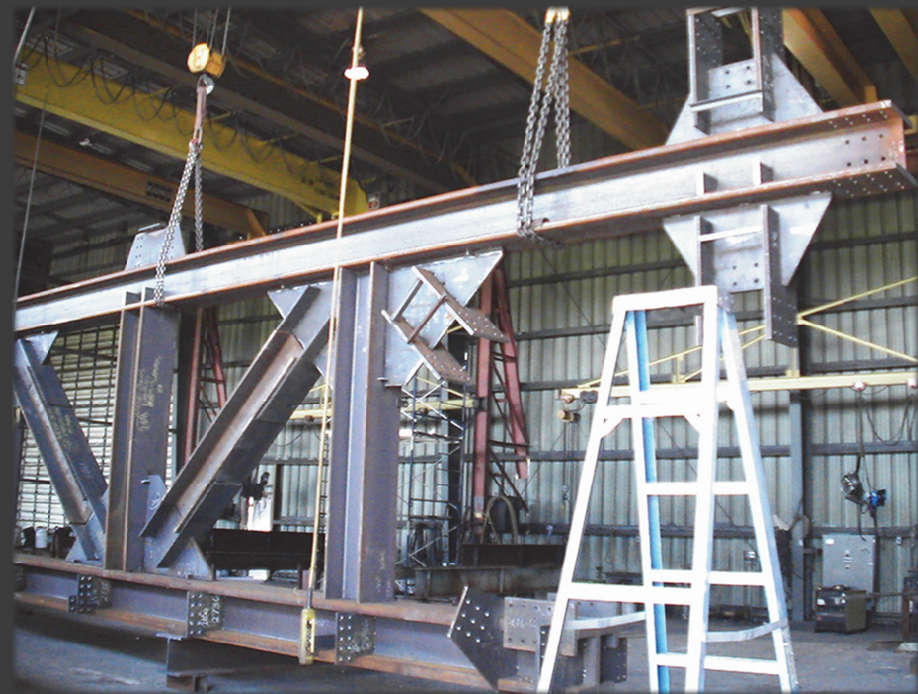
*Peddinghaus BDL 1250A 9 spindle
 *CNC Plasma Cutting Table 8'x20'
 *CNC Angle Line



Lambton Metal Service is one of the most efficient fabrication shops in all of Southwestern Ontario. Our 56,000 sq. ft. facility and work area maintains some state of the art CNC equipment that accurately facilitates in the fabrication of structural and miscellaneous steel.



At Lambton Metal Service we stand by our motto "Safety, Quality and Service". Our fabrication shop is CWB Certified (CSA Standard W47.1 Div. 2) and ISO Registered 9001:2015. We are also a member of the CISC (Canadian Institute of Steel Construction), OSSFA, IHSA, SCA, LDCA, TCA.



* Above, a 35 ft. crane clearance enables our shop to fabricate a 30 ton truss.

* To the right, one of our fabricated pieces NWT Bound.



John Vanderheyden (Estimator) ext. 2228
 Eric Bourne (Field Supervisor) ext. 2262
 Dominic D'Alessandro (Painting QC) ext. 2224
 NACE Level 1 and Level 2, SSPC Specification

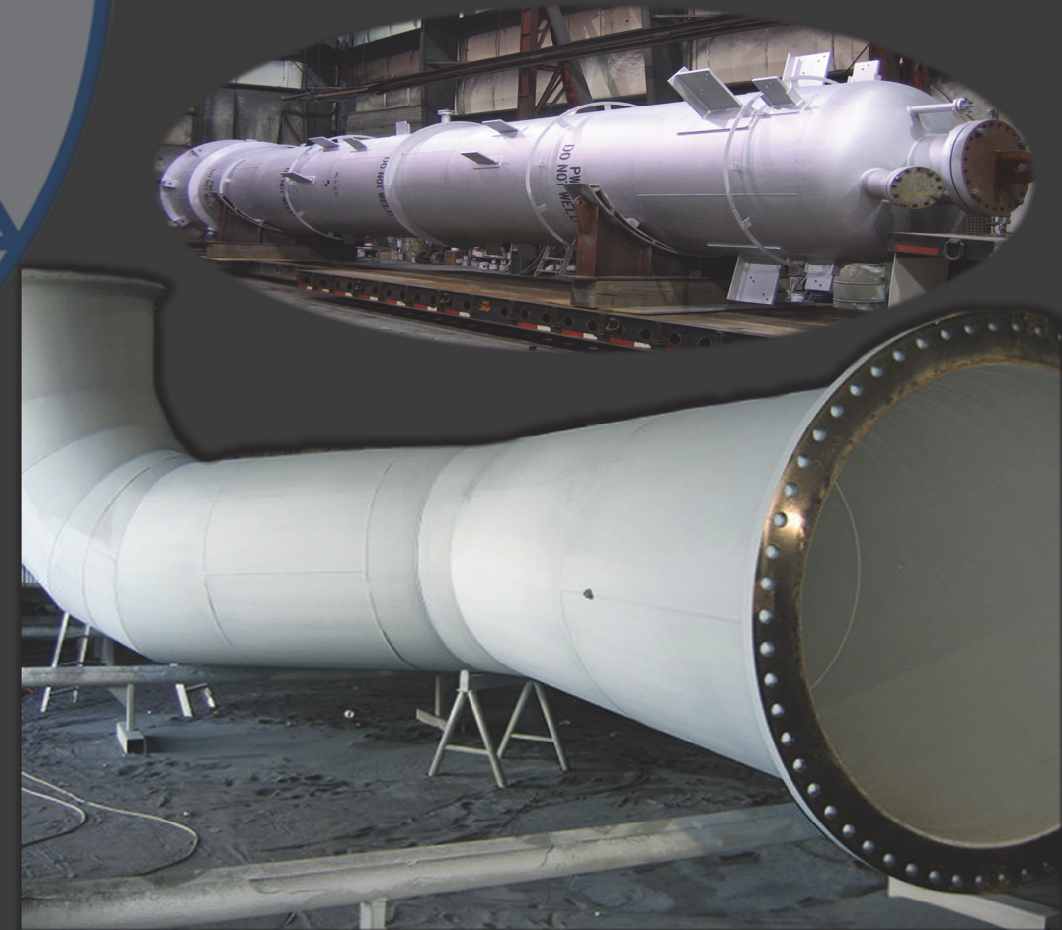
Coating Facility

Lambton Metal Service Coating Division provides a paint shop, field sandblasting, and specializes in many types of industrial coatings. LMS Paint Division shop facility is equipped with the latest in abrasive blasting technology – a fully automated 8 wheel centrifugal blast machine with a 10'(H) x 8'(W) opening to ensure a blasted surface that meets or exceeds the specified cleaning requirements. The use of abrasive steel grit which is recycled, produces a fraction of the waste conventional sandblasting produces.

Field work is completed using a variety of equipment from two line units with 20 ton sand pots to one line 5 ton units. The major abrasive used is black slag.

Painting is conducted inside our Ministry certified controlled shop with a total painting area of approximately 10,000 sq. ft. Coatings in the field or shop are applied using a range of equipment from airless plural component sprayers to conventional sprayers.

We specialize in many surface preparation and coating operations from hand tool cleaning to white metal abrasive blasting and from simple coating applications of alkyds and epoxy systems to plural component 100% solid coating systems. All work is inspected by our NACE Level 1 and Level 2 inspectors.



All work is conducted following:
 -LMS Quality Control Program
 -ISO 9001:2015
 -Safety Program
 -NACE/SSPC Specification
 -Manufacture Guidelines

Our client list includes:
 Fabrication shops
 Mechanical shops
 Chemical and Oil companies
 Government (All 3 Levels)

Structural Steel Erection Team

17 ton Hydro-Lift, 45 ton R/T Crane, & 40 ton Cranes

Lambton Metal Service

Safety, Quality & Service

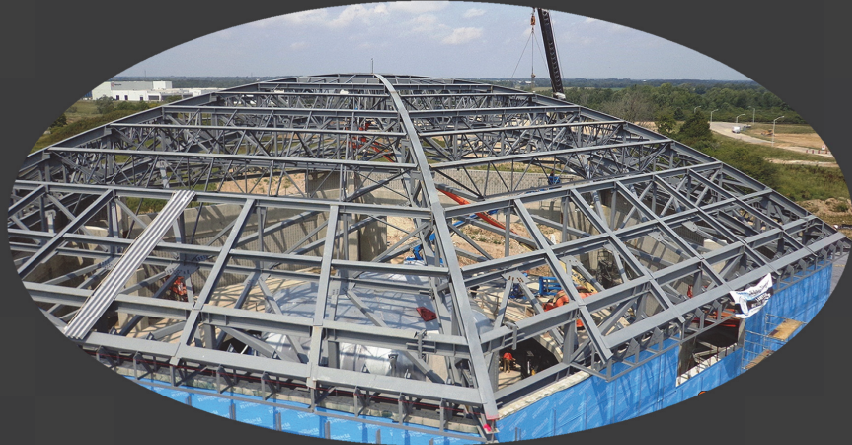
Phone: 519.344.3939 - Toll Free: 1.888.569.6757

Manufacturing Plant Expansion: Detailing, Fabrication, Painting and Erection



Chemical Plant: Complete Steel Fabrication, Painting and Erection

WIND Engineering Building: Detailing, Fabrication, Painting and Erection of Arch Trusses, Beams and Columns



Hospital Pedestrian Bridge: Detailing, Fabrication, Painting and Erection



Hospital: Detailing, Fabrication, Painting and Erection of Beams and Columns Roof, Door, Wall Frames and all miscellaneous steel.

Food Manufacturing Facility, New Construction: Complete Steel Detailing, Fabrication, Painting and Erection



Lambton Metal Service
295 McGregor Road South
Sarnia, Ontario Canada
P.O. Box 457 N7T 7J4
Toll Free 1.888.569.6757
Phone 519.344.3939
Fax 519.337.5473
Web www.lambtonmetalservice.ca